

Lesson – 5

Insert Toolbar (Menu)

Tables

Pivot Table

Pivot Tables make it easy to arrange and summarize complicated data and drill down on details. We can summarize data using a pivot table or by inserting a Pivot chart.

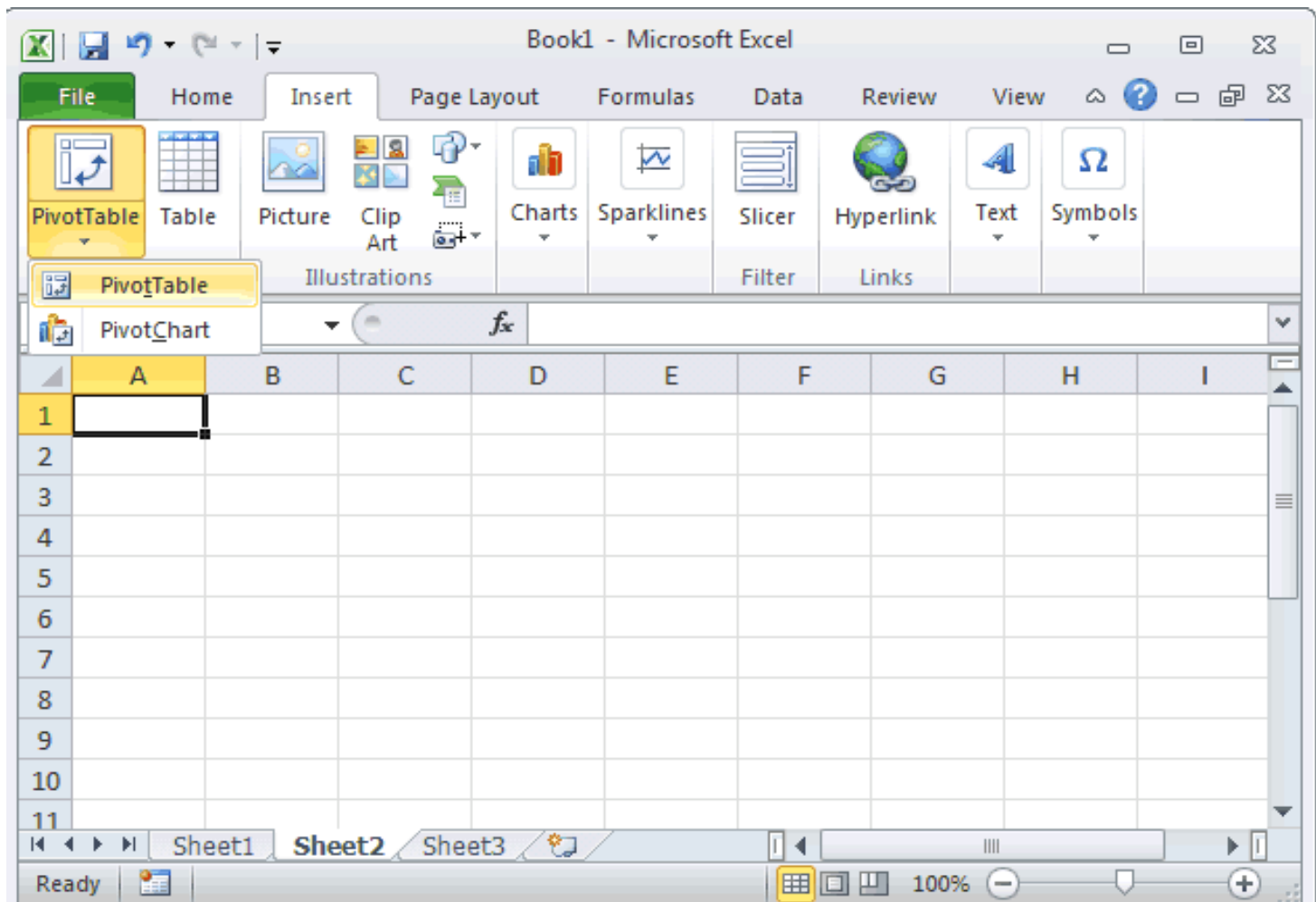
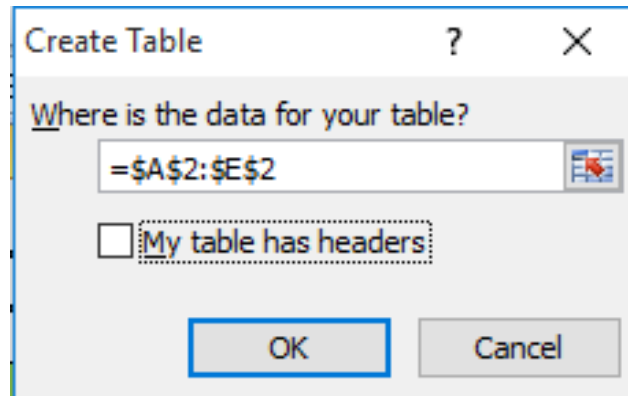


Table (Ctrl + T)

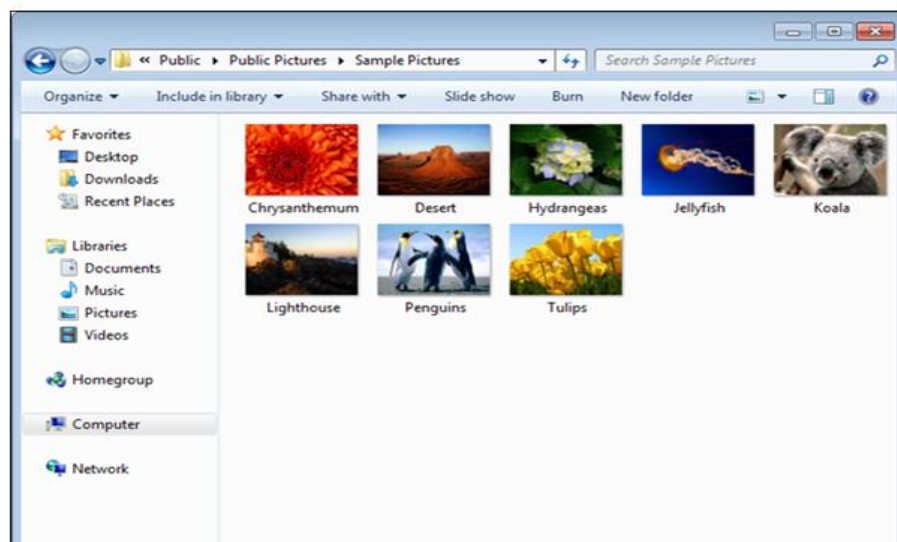
Create a table to manage and analyze related data. Tables make it easy to sort, filter and format data within a sheet.



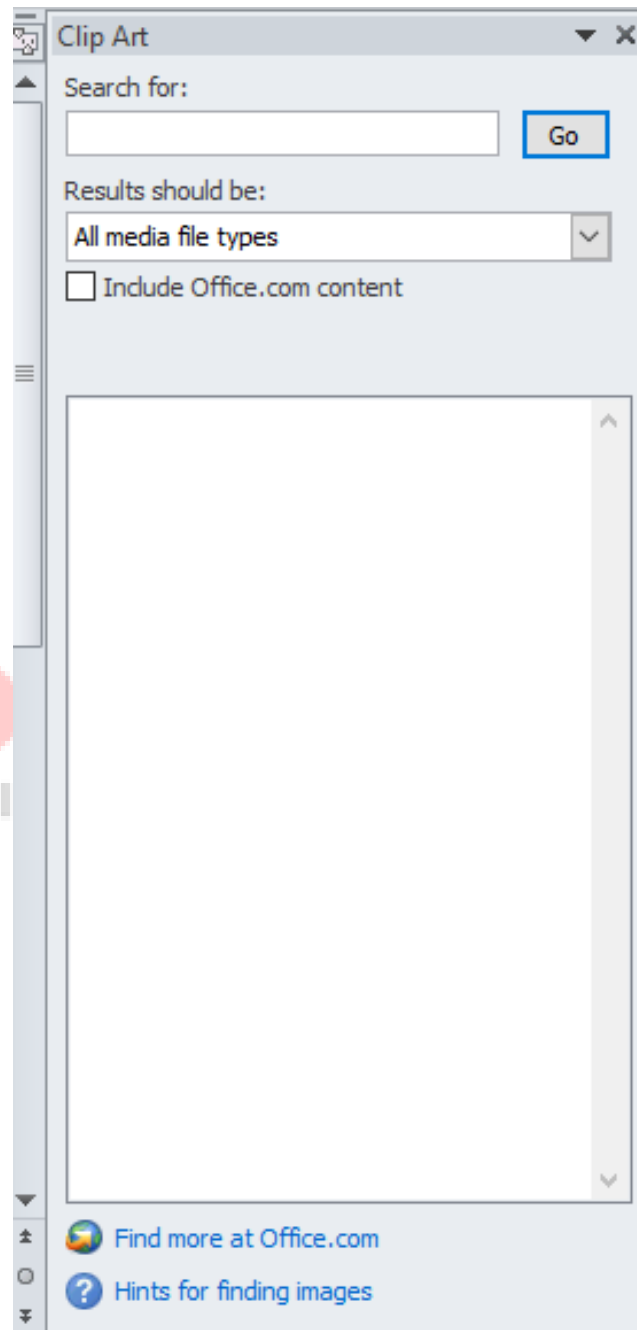
Illustrations

Illustrations option is useful. In this, we can import external picture, clip art, shapes, smart art and screenshots also in excel documents.

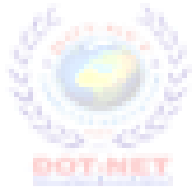
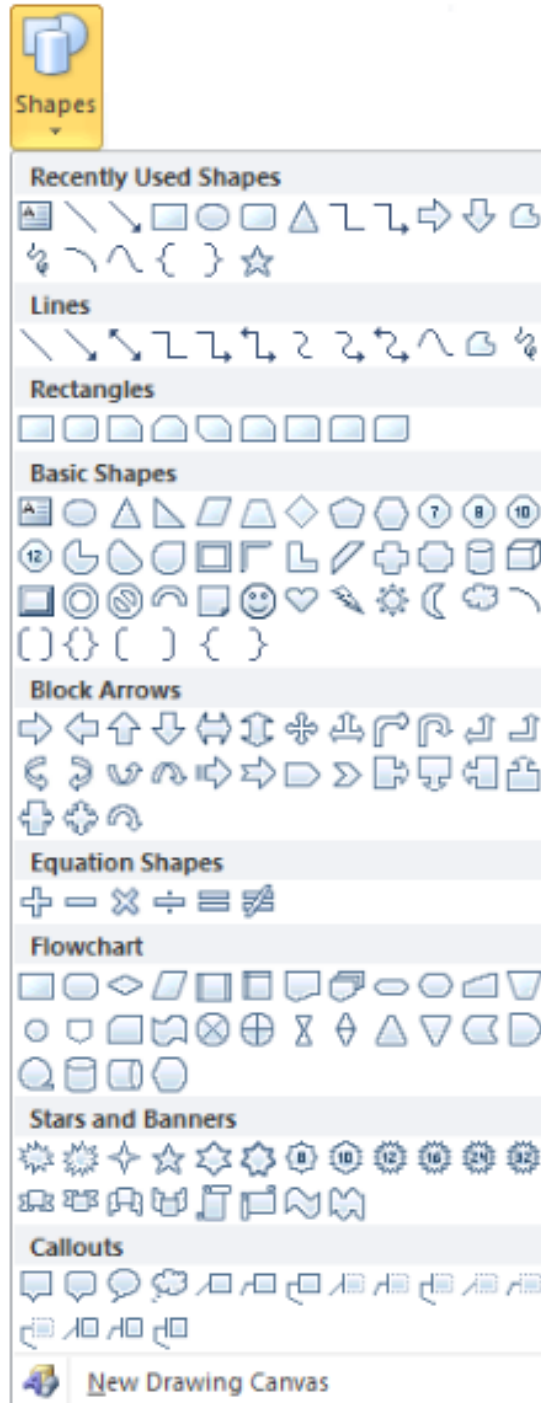
Picture: Insert Picture from file like as:



Clip Art: Insert clip art into the document, including drawing, movies, sounds, or stock photography to illustrate a specific concept like as:



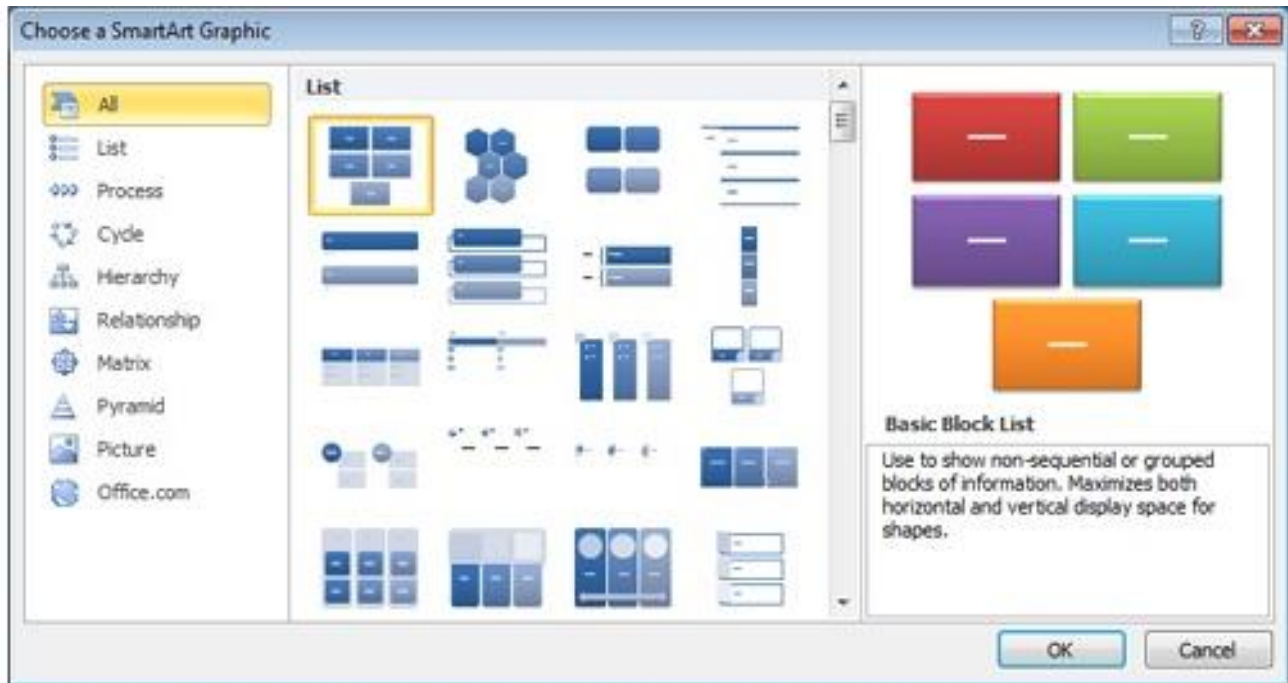
Shapes: Insert ready-made shapes, such as rectangles and circles, arrows, lines, flowchart, symbols and callouts like as:



DO
[An I

stitute
Institute]

Smart Art: Insert a smart art graphics to visually communicate information. Smart Art graphics range from graphical list and process diagram to more complex graphics such as Venn diagrams and organization charts like as:



Screenshot: Insert a picture of any program that is not minimized to the task bar. **Screen clipping** is to insert a picture of any part of the screen.

